

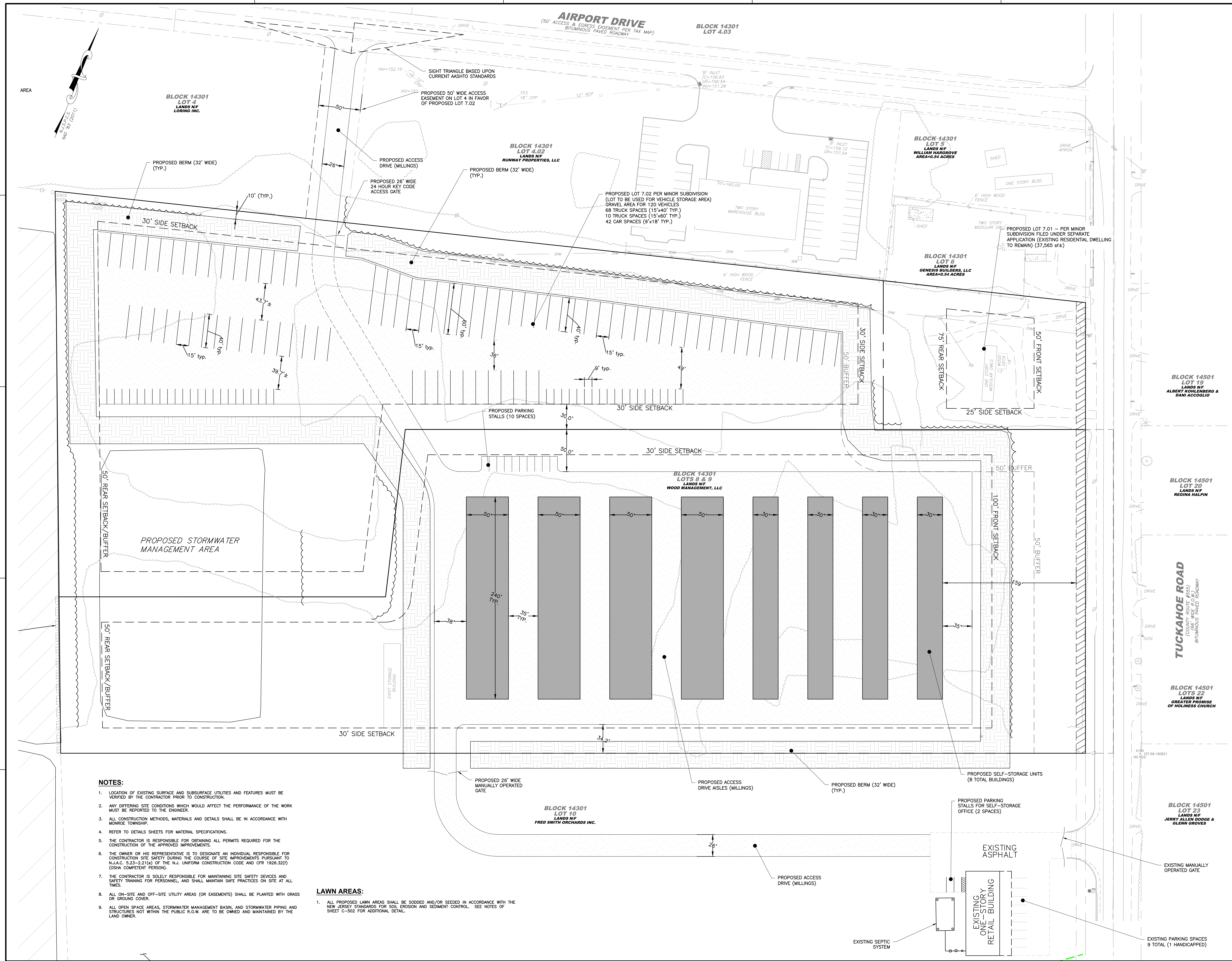
E

D

C

B

A



- NOTES:**
1. LOCATION OF EXISTING SURFACE AND SUBSURFACE UTILITIES AND FEATURES MUST BE VERIFIED BY THE CONTRACTOR PRIOR TO CONSTRUCTION.
 2. ANY DIFFERING SITE CONDITIONS WHICH WOULD AFFECT THE PERFORMANCE OF THE WORK MUST BE REPORTED TO THE ENGINEER.
 3. ALL CONSTRUCTION METHODS, MATERIALS AND DETAILS SHALL BE IN ACCORDANCE WITH MONROE TOWNSHIP.
 4. REFER TO DETAILS SHEETS FOR MATERIAL SPECIFICATIONS.
 5. THE CONTRACTOR IS RESPONSIBLE FOR OBTAINING ALL PERMITS REQUIRED FOR THE CONSTRUCTION OF THE APPROVED IMPROVEMENTS.
 6. THE OWNER OR HIS REPRESENTATIVE IS TO DESIGNATE AN INDIVIDUAL RESPONSIBLE FOR CONSTRUCTION SITE SAFETY DURING THE COURSE OF SITE IMPROVEMENTS PURSUANT TO N.J.A.C. 5.23-2.21(e) OF THE N.J. UNIFORM CONSTRUCTION CODE AND CFR 1926.32(f) (OSHA COMPETENT PERSON).
 7. THE CONTRACTOR IS SOLELY RESPONSIBLE FOR MAINTAINING SITE SAFETY DEVICES AND SAFETY TRAINING FOR PERSONNEL, AND SHALL MAINTAIN SAFE PRACTICES ON SITE AT ALL TIMES.
 8. ALL ON-SITE AND OFF-SITE UTILITY AREAS (OR EASEMENTS) SHALL BE PLANTED WITH GRASS OR GROUND COVER.
 9. ALL OPEN SPACE AREAS, STORMWATER MANAGEMENT BASIN, AND STORMWATER PIPING AND STRUCTURES NOT WITHIN THE PUBLIC R.O.W. ARE TO BE OWNED AND MAINTAINED BY THE LAND OWNER.
- LAWN AREAS:**
1. ALL PROPOSED LAWN AREAS SHALL BE SODDED AND/OR SEEDED IN ACCORDANCE WITH THE NEW JERSEY STANDARDS FOR SOIL EROSION AND SEDIMENT CONTROL. SEE NOTES OF SHEET C-502 FOR ADDITIONAL DETAIL.

Dewberry
 Dewberry Engineers Inc.
 A Dewberry Company
 1015 BRIGGS ROAD
 SUITE 210
 MOUNT LAUREL, NJ 08054
 PHONE: (856) 902-0843
 FAX: (856) 902-0846
 NJ CERTIFICATE OF AUTHORIZATION NO. 24G28047600

APPLICANT:
 WOOD MANAGEMENT, LLC
 749 MULLICA HILL ROAD
 MULLICA HILL, NJ 08062

**PRELIMINARY AND FINAL
 MAJOR SITE PLAN
 PEACH COUNTRY TRACTOR**

BLOCK 14301, LOTS 4 & 7-10
 TOWNSHIP OF MONROE
 GLOUCESTER COUNTY, NEW JERSEY

Walter C. Bronson, Jr.
WALTER C. BRONSON, JR.
 PROFESSIONAL ENGINEER
 N.J. LIC. NO. 24G03595600

SCALE
 0' 40' 80'
 GRAPHIC SCALE: 1" = 40'

NO.	DATE	BY	DESCRIPTION

REVISIONS

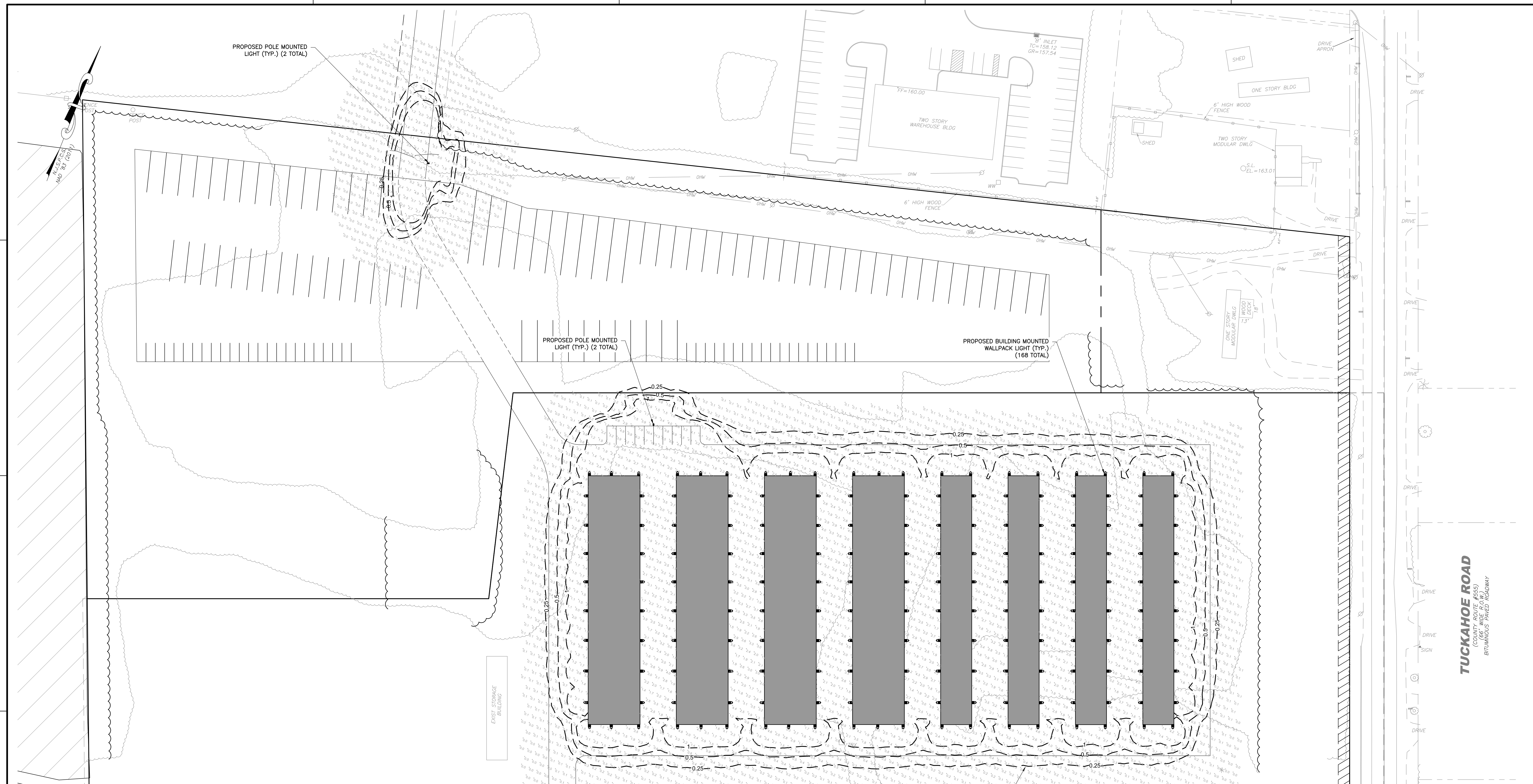
DRAWN BY	BDJ
APPROVED BY	WCB
CHECKED BY	WCB
DATE	11/25/2020
TITLE	

SITE PLAN

PROJECT NO. 50132475

C-103

SHEET NO. 4 OF 10



Dewberry
 Engineers Inc.
 A Dewberry Company
 1015 BRIGGS ROAD
 SUITE 210
 MOUNT LAUREL, NJ 08054
 PHONE: (856) 802-0843
 FAX: (856) 802-0846
 NJ CERTIFICATE OF AUTHORIZATION NO. 24G28047600

APPLICANT:
 WOOD MANAGEMENT, LLC
 749 MULLICA HILL ROAD
 MULLICA HILL, NJ 08062

PRELIMINARY AND FINAL
 MAJOR SITE PLAN
 PEACH COUNTRY TRACTOR
 BLOCK 14301, LOTS 4 & 7-10
 TOWNSHIP OF MONROE
 GLOUCESTER COUNTY, NEW JERSEY

Walter C. Bronson, Jr.
WALTER C. BRONSON, JR.
 PROFESSIONAL ENGINEER
 NJ LIC. NO. 24G03585600

SCALE
 0' 40' 80'
 GRAPHIC SCALE: 1" = 40'

NO.	DATE	BY	DESCRIPTION

REVISIONS

DRAWN BY: BDJ
 APPROVED BY: WCB
 CHECKED BY: WCB
 DATE: 11/25/2020
 TITLE:

LIGHTING PLAN

PROJECT NO. 50132475

C-105

SHEET NO. 6 OF 10

TWR1 LED LED Wall Luminaire

Specifications
 Width: 12.125"
 Height: 12.125"
 Depth: 2.187"
 Weight: 11.95 lbs

Ordering Information
 EXAMPLE: TWR1 LED P2 50K MVOLT DBRTXD

Code	Part Number	Part Name	Part Description	Part Quantity	Part Unit
DBRTXD	P2 50K MVOLT DBRTXD	LED WALL LUMINAIRE	50,000 LUMENS, 120V, 150W, 12.125" W, 12.125" H, 2.187" D, 11.95 LB	1	EA

FEATURES & SPECIFICATIONS
 Introduction: The popular TWR1 Luminaire is now available with long lasting, energy efficient LED technology. Featuring a classic design, the TWR1 LED offers a traditional appearance and is powered by advanced LEDs.
 The TWR1 LED luminaire is powerful yet energy efficient, capable of replacing up to a 250W metal halide luminaire while saving up to 80% in energy costs. Offering an expected service life of more than 20 years, the TWR1 LED eliminates frequent lamp and ballast replacements associated with traditional technologies.

KAD LED LED Area Luminaire

Specifications
 Length: 61.125"
 Width: 12.125"
 Height: 2.187"
 Weight: 35 lbs

Ordering Information
 EXAMPLE: KAD LED 40C 1000 40K RS MVOLT SPD04 DBDXD

Code	Part Number	Part Name	Part Description	Part Quantity	Part Unit
DBDXD	40C 1000 40K RS MVOLT SPD04 DBDXD	LED AREA LUMINAIRE	40,000 LUMENS, 120V, 100W, 61.125" L, 12.125" W, 2.187" H, 35 LB	1	EA

Capable Luminaire
 This luminaire is part of an AC-Certified solution for BICAMP or XPLUM™ Wireless control networks, providing out-of-the-box control compatibility with simple commissioning when ordered with drive and control options marked by a **WIRELESS** designation.
 1. See ordering tree for details.
 2. An AC-Certified Solution for BICAMP requires the order of one BICAMP node per luminaire. Sold Separately. See to Specs: BICAMP-DLX.

BUILDING LIGHT FIXTURE SCHEDULE

Symbol	Qty	Catalog Number	Description	Lumens	Watts	Mounting Height
⊗	168	TWR1 LED P2 50K MVOLT	TWR1 LED WALLPACK ABSOLUTE	34.4	8'	
○	2	KAD LED 60C 1000 40K R2 MVOLT	KAD LED, 60 LED, 1 AMP MVOLT DRIVER, 5000K, TYPE 2 OPTICS ABSOLUTE	216	15'	

