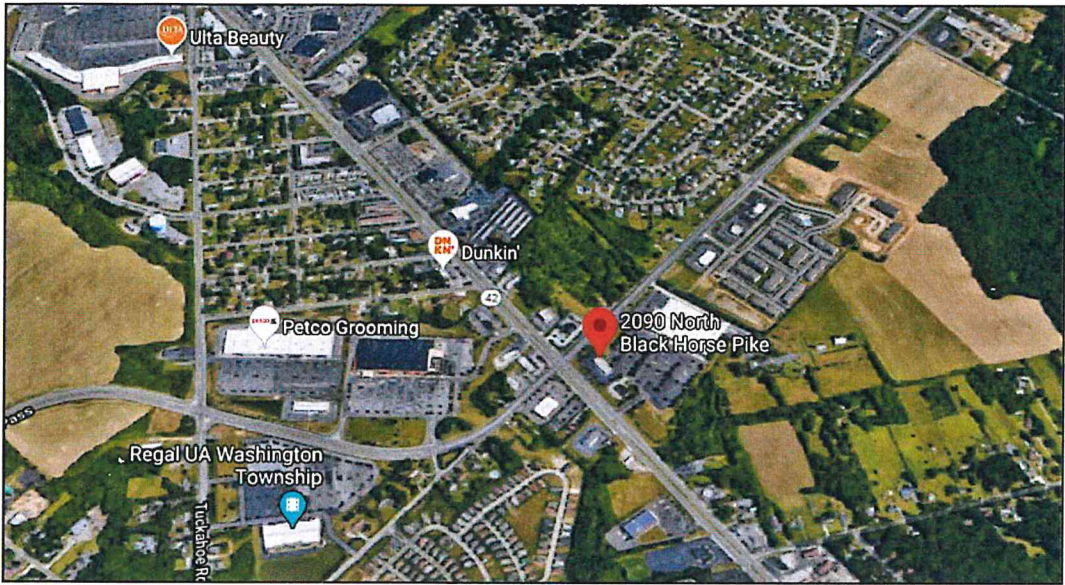


The Botanist

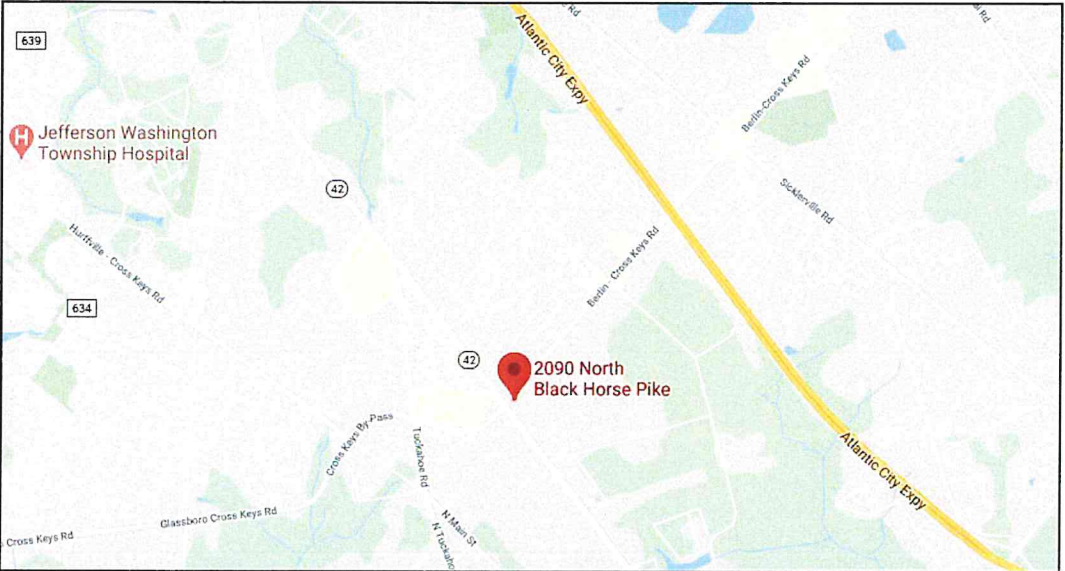
Signs of Success

247 Merrick Road, Suite 101
Lynbrook, NY 11563
T: 516 823-9000
F: 516 823-1023
www.signs-of-success.com

2090 N. Black Horse Pike
Williamstown, NJ 08094
Project #: 20.0301
Contact - Rich Ferrara
Drawn by - Philip Light
30 June 2020



Aerial View



Location Map



Sign Locations



Existing Conditions - Storefront Elevation A



Existing Conditions - Side Elevation B

Signs of Success

247 Merrick Road, Suite 101
Lynbrook, NY 11563
T: 516 823-9000
F: 516 823-1023
www.signs-of-success.com

REVISIONS

Description	Date

CLIENT ACCEPTANCE

Drawings must be signed, dated and returned to Signs of Success to commence fabrication.

Approved By _____

Date _____

This custom design is the exclusive property of Signs of Success. All rights to its use are restricted.

CLIENT

The Botanist

JOB NUMBER

20.0301

JOB NAME

2090 N. Black Horse Pike, Williamstown, NJ

PROJECT MANAGER

Rich Ferrara

DRAWN BY

Philip Light

SCALE

As Noted

DATE

30 June 2020

PAGE

2 of 4

Signs of Success

247 Merrick Road, Suite 101
Lynbrook, NY 11563
T: 516 823-9000
F: 516 823-1023
www.signs-of-success.com

REVISIONS

Description	Date

CLIENT ACCEPTANCE

Drawings must be signed, dated and returned to Signs of Success to commence fabrication.

Approved By _____

Date _____

This custom design is the exclusive property of Signs of Success. All rights to its use are restricted.

CLIENT

The Botanist

JOB NUMBER

20.0301

JOB NAME

2090 N. Black Horse Pike, Williamstown, NJ

PROJECT MANAGER

Rich Ferrara

DRAWN BY

Philip Light

SCALE

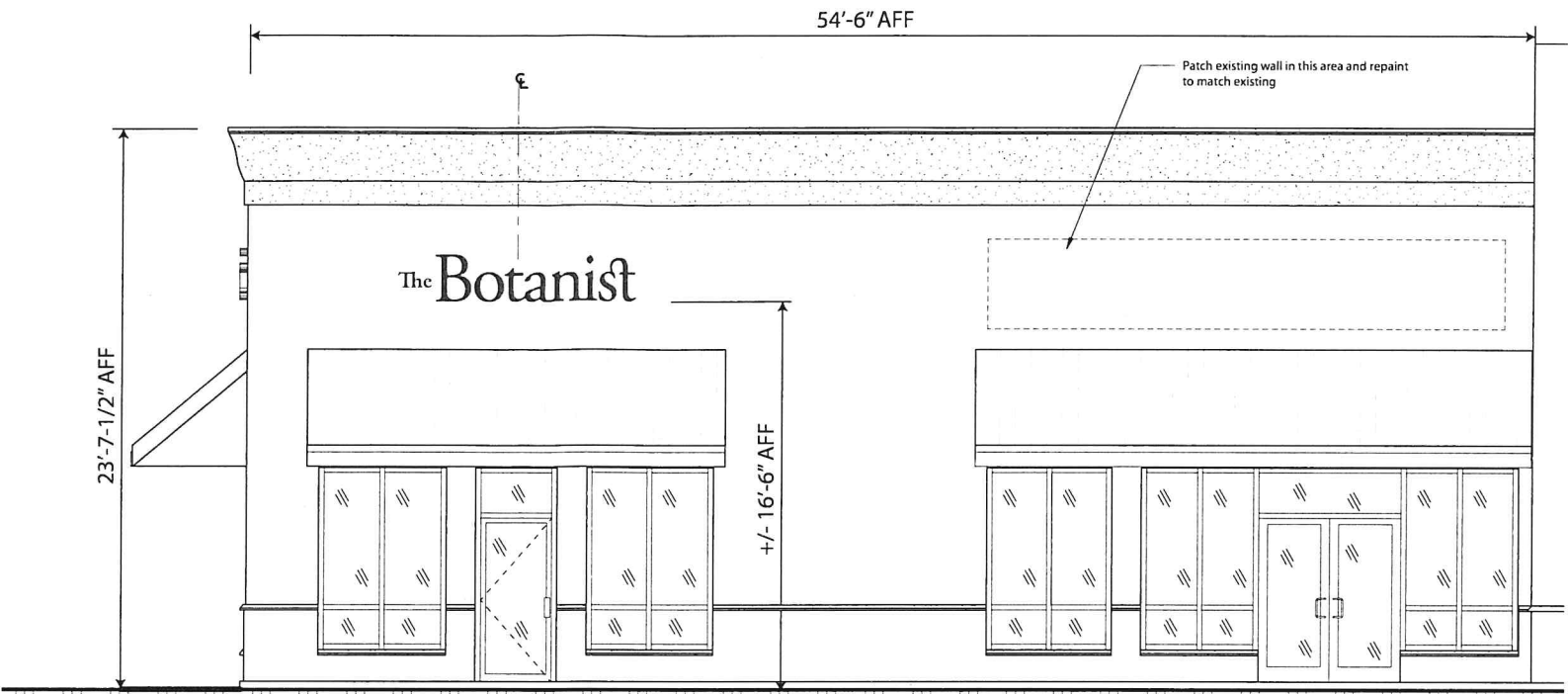
As Noted

DATE

30 June 2020

PAGE

3 of 4

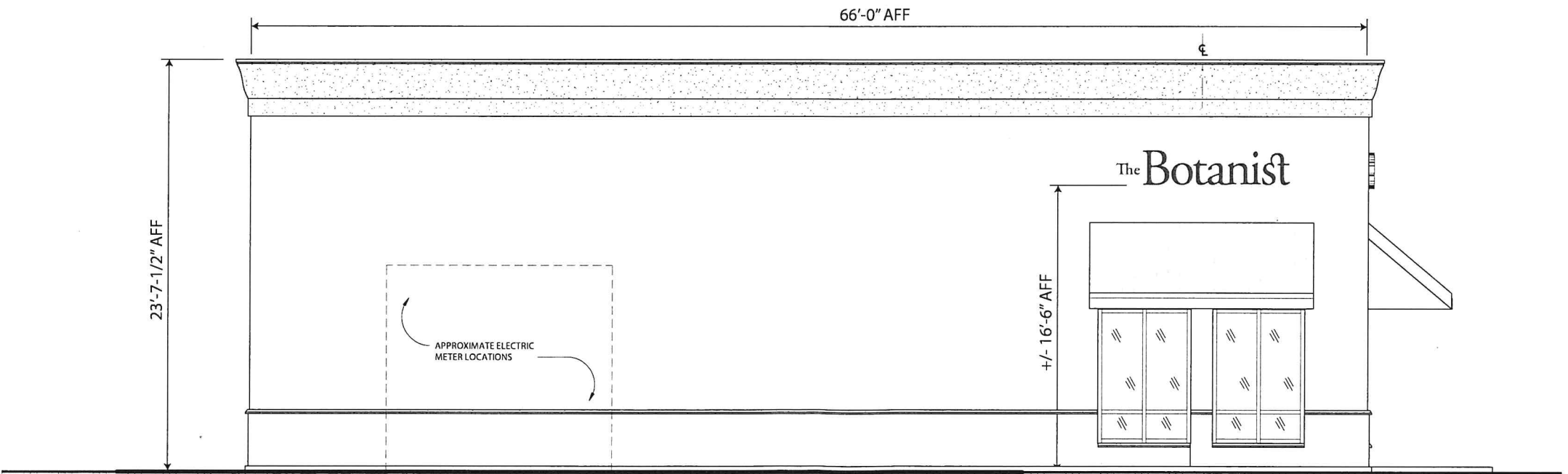


Storefront Elevation A

1/8" = 1'-0"

General Notes:

- Technical survey required to confirm power availability and attachment methods.
- Sign to be centered over entry door.
- Ensure primary sign and side elevation sign are at the same height from grade.

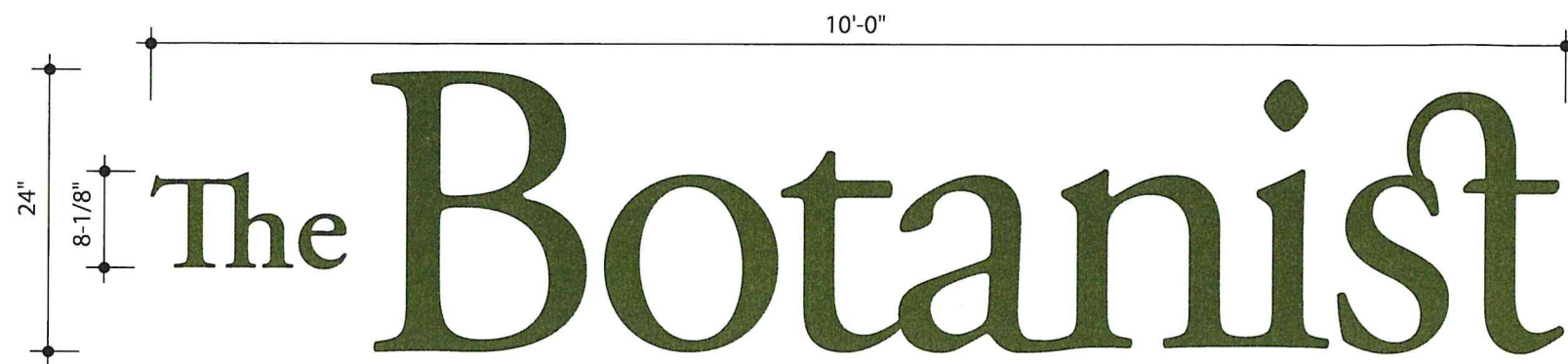


Storefront Elevation B

1/8" = 1'-0"

General Notes:

- Technical survey required to confirm power availability and attachment methods.
- Sign to be centered over awning.
- Ensure primary sign and side elevation sign are at the same height from grade.



Primary Sign Elevation
1-1/2" = 1'-0"

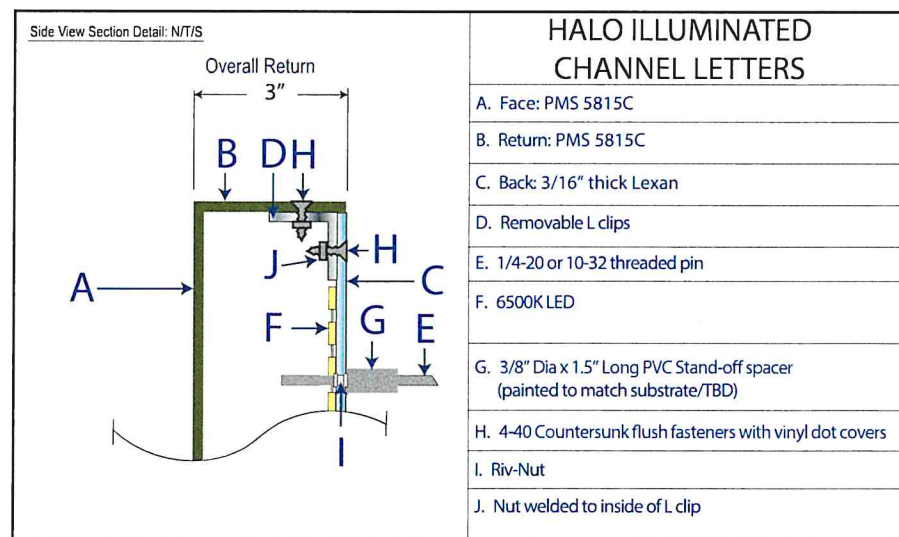
Specifications

- Signage comprised of fabricated aluminum Halo-illuminated reverse channel letters painted to match PMS 5815C.
- Letters to have 3" deep returns with 1-1/2" long stand-off spacers for a total projection from facade of 4-1/2".
- Sign to be mounted to facade with 1/4-20 or 10-32 threaded mounting pins (through bolt where possible)
- Transformer to be concealed inside UL listed transformer enclosure in remote location (Max 22 feet from sign location) on interior of facade. G.C. to ensure transformer location is accessible with removable access panel. Verify penetrations on interior of building are not visible to customers. Notify Signs of Success project manager immediately if electrical penetration or any pins will be visible on interior of store.
- Dedicated 120v/20 amp circuit whip to be supplied to transformer location by others.
- Remote disconnect, Timeclock or photo-cell controls by others.
- Municipal and Landlord approval required.
- Technical survey required to confirm facade dimensions & power requirements.
- Quantity: [2] Two

20 Sq. Ft.



Simulated Night View
NTS



Power Supplied with UL Listed, water-tight transformer enclosure. All conduit, tubing, Wiring, Ballast, Transformers and other equipment is Concealed

Removable "L" clip construction with PMS 5815C vinyl dots installed on returns to conceal fastener heads

3" Deep Fabricated aluminum reverse channel letters with faces and returns painted to match PMS 5815C

3/16" clear sanded Lexan letter backs

6500K LED array mounted to acrylic back facing into back of letter face

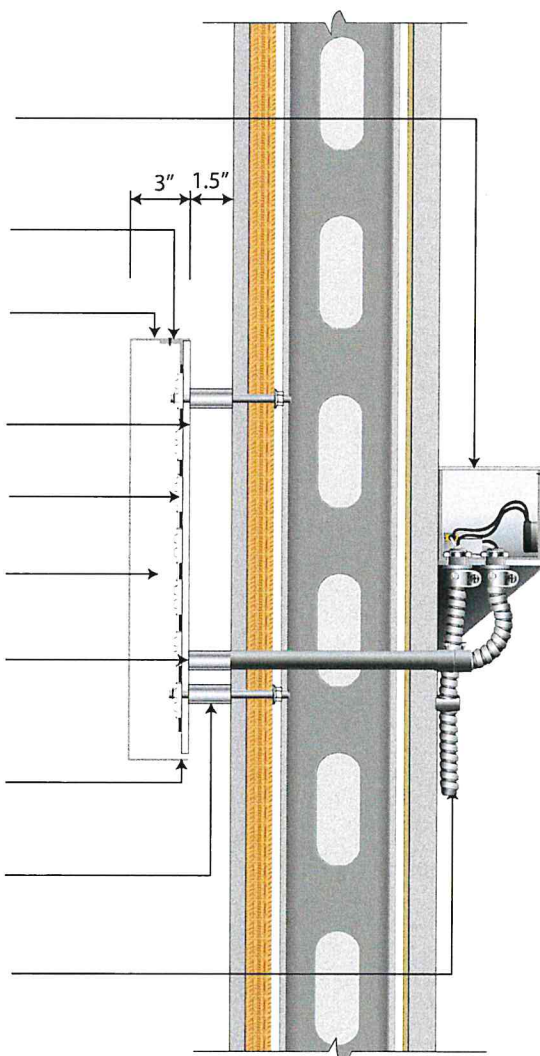
Interior painted StarBrite reflective white

Secondary electrical feed through PVC stand-off spacers to match facade color (TBD). Maintain all electrical penetrations on same horizontal plane

Weep hole at lowest point of lexan back on each logo component

10-32 mounting pins through facade and backing (VIF) with 3/8" dia x 1.5" long pvc stand-off spacers painted to match facade (TBD)

Primary power feed with remote disconnect switch/time clock controls by others



Sign Section - NTS

Signs of Success

247 Merrick Road, Suite 101
Lynbrook, NY 11563
T: 516 823-9000
F: 516 823-1023
www.signs-of-success.com

REVISIONS

Description	Date

CLIENT ACCEPTANCE

Drawings must be signed, dated and returned to Signs of Success to commence fabrication.

Approved By _____

Date _____

This custom design is the exclusive property of Signs of Success. All rights to its use are restricted.

CLIENT

The Botanist

JOB NUMBER

20.0301

JOB NAME

2090 N. Black Horse Pike, Williamstown, NJ

PROJECT MANAGER

Rich Ferrara

DRAWN BY

Philip Light

SCALE

As Noted

DATE

30 June 2020

PAGE

4 of 4